



MIGHTY BIG PUNCH

There are a lot of reasons to avoid generics. Many are still crawling on your plants. Combine Avid with Bioline biological control agents for a mighty big punch against mites.

EVERY FLOWER TELLS A STORY™

 **Avid® 0.15EC**
Miticide/insecticide

syngenta.

Avid® miticide/insecticide is a proven standard in mite and leafminer control. Growers continue to depend on it for unsurpassed control of these pests.

In addition, Avid provides these benefits:

- Rain-fast within hours of application, with no unsightly residue and very little odor.
- Reduces or prevents damage to plants — pests stop feeding on plant tissue within hours of ingestion.
- Ideal for rotation in resistance management programs due to its unique chemistry and mode of action.

How Avid works

Avid penetrates the leaf surface to form a reservoir of active ingredient inside the leaf tissue. This reservoir provides long-lasting activity against damaging foliar-feeding insects and mites. Avid provides control of labeled pests by direct contact and through ingestion. Having translaminar activity, Avid penetrates the pests' nerve receptors. Paralysis sets in within hours, and pests are no longer able to feed. They die within two to four days.

Considering generics? First, weigh the risks.

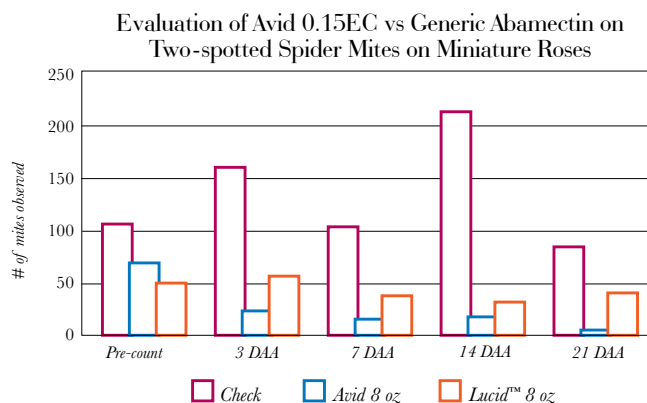
Formulating a miticide/insecticide product with abamectin is a highly complex process. Loss of the chemical's full efficacy is a constant risk.

Syngenta's proven purification process filters out the less-active avermectin strains, leaving only the most potent active ingredient for the highest level of pest control.

- Engineered for maximum leaf penetration and uptake to provide extended residual control that is effective, even under tough conditions.
- Formulated for extended storage stability, offering peace of mind and confidence.

Avid vs. generic abamectin

This bar graph shows the superior mite control obtained with Avid versus a generic abamectin formulation.



Mites:¹
 European Red Mite
 Two-spotted Spider Mite
 Carmine Spider Mite
 Southern Red Mite
 Spruce Spider Mite
 Tarsonemid Mites:³
 Cyclamen
 Broad Mites
 Eriophyid Mites:
 Rust
 Bud Mites

Liriomyza Leafminers²
 Boxwood Leafminer
 Aphids
 Thrips
 Whiteflies

A variety of uses

Avid's unique formulation is registered for use on herbaceous and woody ornamentals, including foliage plants and Christmas trees grown outdoors or in greenhouses and shade houses. It is also effective on foliage plants, Christmas trees and other woody ornamentals. Avid provides tank-mix flexibility with a 12-hour REI (re-entry interval), offering next day access to the greenhouse or field.

Use rates

Apply Avid at 8–16 fl oz per acre. Use sufficient water volume to achieve uniform and thorough plant coverage.

Compatible with beneficials

Avid can be used in ICM (Integrated Crop Management) programs with biological control agents. Abamectin, the active ingredient in Avid, quickly moves into plant tissue after application and photodegrades from the plant surface. Photodegradation can occur more quickly on plants grown outdoors and under high light conditions. As a general rule, wait at least 7 days after an Avid application before releasing predatory mites like Phytoline p (*Phytoseiulus persimilis*) and other beneficial arthropods.

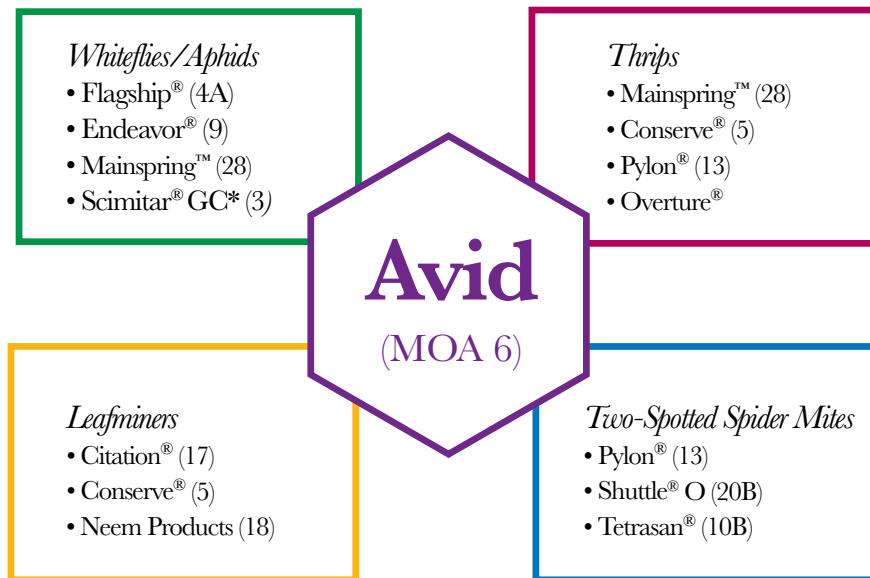
Resistance management

To reduce the potential for resistance development, consider these resistance management guidelines:

- Follow label recommendations for each pest.
- Apply to young, immature stages when first observed.
- Make two to three applications on a 7-day interval then rotate to other products with a different MOA. (Leafminer programs require three applications, while mite programs require two applications)
- Use in conjunction with beneficial predators.

Because of its unique mode of action, Avid may be used in rotation with other effective products registered on similar pests in ornamentals. These solutions are listed by their brand name with their mode of action in parentheses:

NOTE: Products identified are representative of those chemical classes listed and are not meant to be inclusive of all available products.



*Scimitar GC is a Restricted Use Pesticide

For more information about how the Syngenta Plant Protection portfolio can help keep pests from invading your plants, please visit AvidInsecticide.com.



© 2015 Syngenta. **Important: Always read and follow label instructions. Some products may not be registered for sale or use in all states or counties. Please check with your local extension service to ensure registration status. Scimitar® GC is a Restricted Use Pesticide.** Avid®, Citation®, Endeavor®, Flagship®, Mainspring™, Scimitar®, Every Flower Tells A Story™, the Alliance frame, the Purpose icon and the Syngenta logo are trademarks of a Syngenta Group Company. Conserve® is a trademark of Dow AgroSciences LLC. Lucid™ is a trademark of Phoenix Environment Care, LLC. Pylon® is a trademark of BASF Corporation. Shuttle® O is a trademark of OHP, Inc. TetraSan® Miticide and Overture® are registered trademarks of Valent U.S.A. Corporation. Syngenta Customer Center: 1-866-SYNGENT(A) (796-4368).