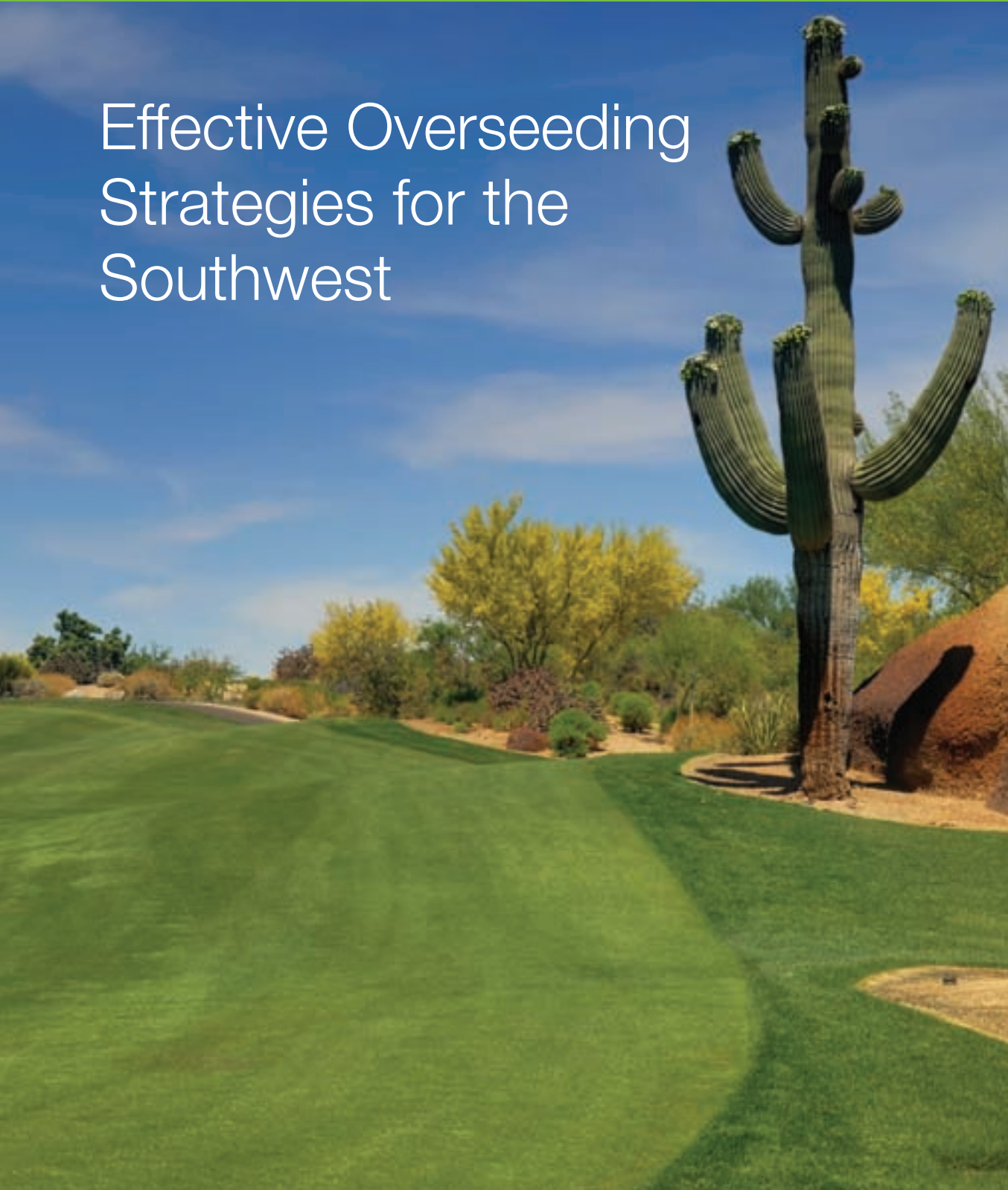




Effective Overseeding Strategies for the Southwest



Effective Overseeding Strategies for the Southwest

When overseeding for the winter, there is a narrow window for establishing cool-season turf species for winter play. Since weather conditions favor the bermudagrass base at the time of overseeding, choosing the most effective products and using them at the right timing is essential for establishing and maintaining the winter overseed.

Overseeding Application Overview

The following applications are recommended for achieving the best results during overseeding.

Timing	Product	Application Recommendation
6 to 8 weeks prior to seeding	Barricade® herbicide	0.4 to 0.65 lbs active ingredient/A
1 to 5 days prior to scalping	Primo Maxx® plant growth regulator*	0.5 fl oz/1,000 sq ft on fairways and 0.25 fl oz on greens
4 to 5 days prior to overseeding	Reward® herbicide	32 fl oz/A + 0.25% V/V NIS
0-2 days prior to overseeding greens and tees	Heritage® WDG fungicide	0.4 fl oz per 1000 sq ft if not using treated seed
10 to 14 days after overseeding greens and tees	Heritage G	4 lbs per 1,000 sq ft or use Subdue® GR fungicide at 1.5 lbs/1,000 sq ft
1 to 7 days after the first mowing	Primo Maxx	0.35 fl oz/1,000 sq ft or 0.1 to 0.125 fl oz on greens
21 days later	Primo Maxx	0.2 to 0.35 fl oz/1,000 sq ft or 0.1 to 0.125 fl oz on greens
8-10 weeks after overseeding or when ryegrass is at 85 percent cover Use three applications at 30-day intervals	Trimmit® 2SC plant growth regulator	8 to 10 fl oz/A every 4 weeks for 3 applications as long as the ryegrass is growing

Recommendations Before Scalping

Prior to scalping, Primo Maxx® plant growth regulator can be used to suppress bermudagrass growth, allowing the overseeding species to establish without competition. Post-overseed applications of Primo Maxx will provide continued suppression of bermudagrass growth and enhance color and density of the overseed stand.

*If you are using Primo Maxx in conjunction with Reward® herbicide in the burndown phase, time your application at least two days prior to the Reward application.

Burndown Application

Before overseeding with ryegrass, use a burndown herbicide such as Reward to help decrease the amount of time, labor and green waste associated with overseeding. Reward is a non-selective, contact herbicide that does not translocate into bermudagrass roots or rhizomes and has no soil activity or residual control. Reward herbicide binds strongly to soil particles and will be deactivated upon contact.

After burndown, initiate one to two irrigation events to wash off any remaining Reward residue from the stubble. As a best practice, use flat fan or air induction nozzles for foliar coverage.

Disease Prevention During Overseeding

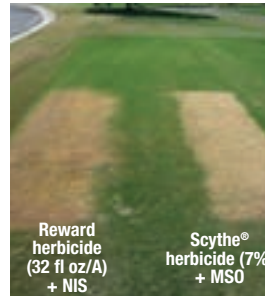
Frequent irrigation and high temperatures at overseeding are conducive for *Pythium* spp. and other damping-off fungi such as *Rhizoctonia* spp. and *Fusarium* spp., which can be very harmful to seedling turf. To ensure disease protection throughout seedling development, the following application methods are recommended:

- **Prior to seeding:** Apply Heritage® WDG fungicide at 0.4 fl oz/1000 sq ft or Heritage G at 4 lbs/1000 sq ft.
- **14 days after the first application:** Apply Heritage WDG at 0.4 fl oz/1000 sq ft or Heritage G at 4 lbs/1000 sq ft.
- **Alternative to Heritage or used as a rotation partner:** Subdue® GR fungicide at 1.5 lbs or 1 fl oz/1,000 sq ft of Subdue Maxx® fungicide.

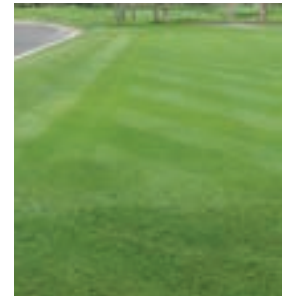
Post-Overseeding Applications

Post-overseeding applications of Primo Maxx can greatly improve the density and color of the ryegrass stand and reduce competition from the bermudagrass base (refer to the chart for post overseeding recommendations).

Burndown of existing turf: Trial in Palm Spring, Calif. (2012)



2 days after application

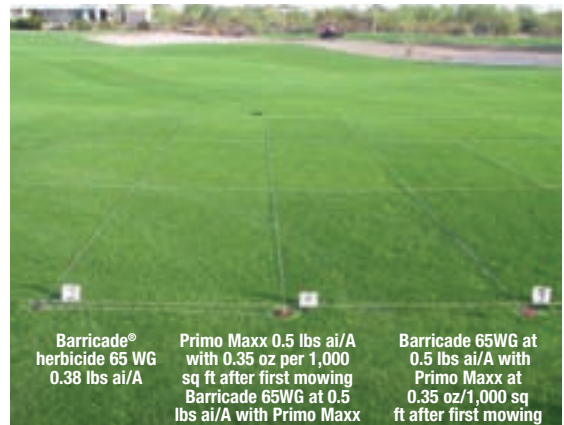


Trial area after overseeding

Damping-off control at overseeding with Heritage® fungicide



Post-Overseeding application of Primo Maxx® plant growth regulator: Trial in Scottsdale, Ariz. (2002)





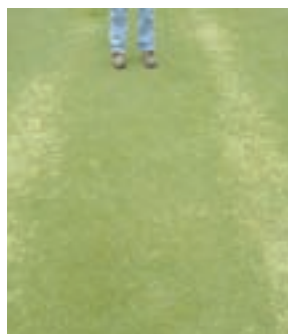
Poa Annua Control Recommendations During Overseeding

Poa annua, a common winter annual weed in the Southwest, can effectively compete with overseeded ryegrass and be unsightly. This weed may not be readily visible until the plants begin to flower in the spring, but by then, it may be too late to control. To help prevent *Poa annua*, incorporate the following control strategies into your overseeding process:

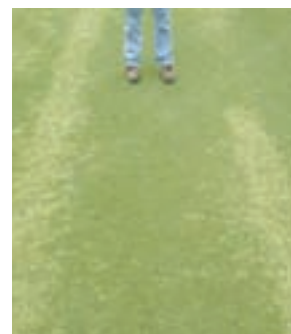
Prior to overseeding

Apply Barricade® herbicide on fairways, roughs and tees at a rate of 0.4 to 0.65 lbs ai/A six to eight weeks prior to overseeding. Another application of Barricade can be made four weeks after overseeding or when the ryegrass roots are in the second inch of soil. Barricade application rates on the ryegrass overseeding cannot exceed more than two applications per year and a total of 0.85 lbs ai/A per year.

Poa Annua control prior to overseeding: N.C. State University Trial (2001/2002)



Barricade® 65WG herbicide
0.77 lbs /A 10 weeks
prior to overseeding



Barricade 65WG
0.50 lbs /A 8 weeks prior
to overseeding

After overseeding

Once the overseeding is established, an early post-emergence application is recommended. Three monthly applications of Trimmit® 2SC plant growth regulator will help suppress *Poa annua*.

Post-overseeding applications: Trial in Palm Springs, Calif



Three 8 fl oz/A applications of Trimmit® 2SC plant growth regulator applied beginning in mid-December

FOR MORE INFORMATION about overseeding applications, please visit GreenCastOnline.com or call 1-866-SYNGENT(A) (796-4368).



©2014 Syngenta. **Important: Always read and follow label instructions. Some products may not be registered for sale or use in all states or counties. Please check with your state or local Extension Service to ensure registration status.** Barricade®, Heritage®, Primo Maxx®, Reward®, Subdue®, Subdue Maxx®, Trimmit®, the Alliance Frame, the Purpose Icon and the Syngenta logo are trademarks of a Syngenta Group Company. Scythe® is a registered trademark of Mycogen Corporation.